

Annual Report 2012

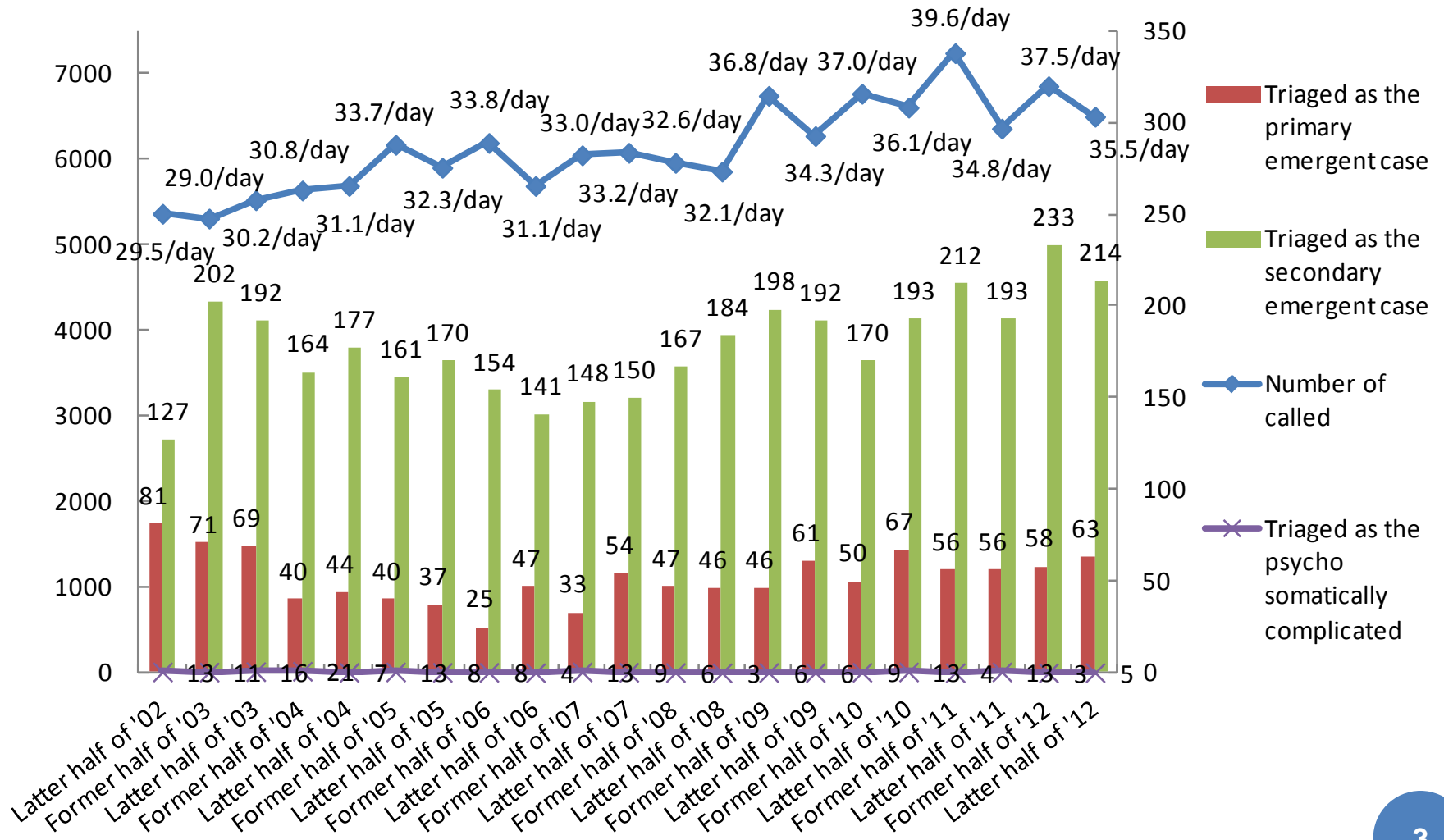
METROPOLITAN EMERGENCY INFORMATION CENTER FOR THE MENTAL ILLNESS (MEICMI)

Japanese Association of Mental Health Services (NPO)

THE RESULTS OF 2012

	4	5	6	7	8	9	10	11	12	1	2	3	Total
Number of the phone calls	1015	1221	1063	1106	1208	1242	1024	1045	1088	1219	1053	1070	13354
Primary emergent	15	13	9	6	7	8	10	6	13	15	8	11	121
Secondary emergent	34	52	34	40	37	36	27	30	34	44	42	37	447
Psycho somatically complicated	1	0	0	2	0	0	0	1	3	1	0	0	8

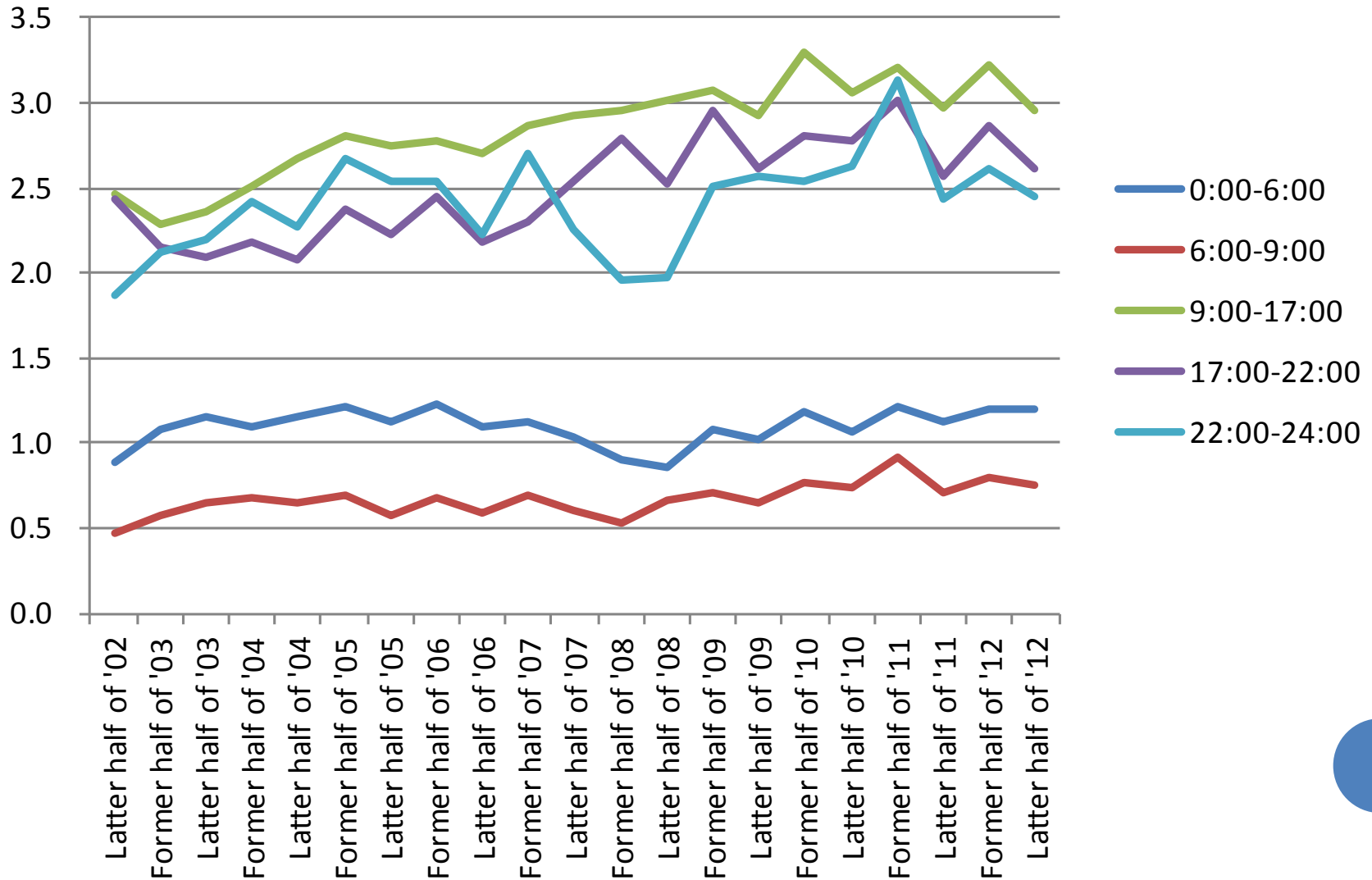
NUMERICAL CHANGE IN PHONE CALLS



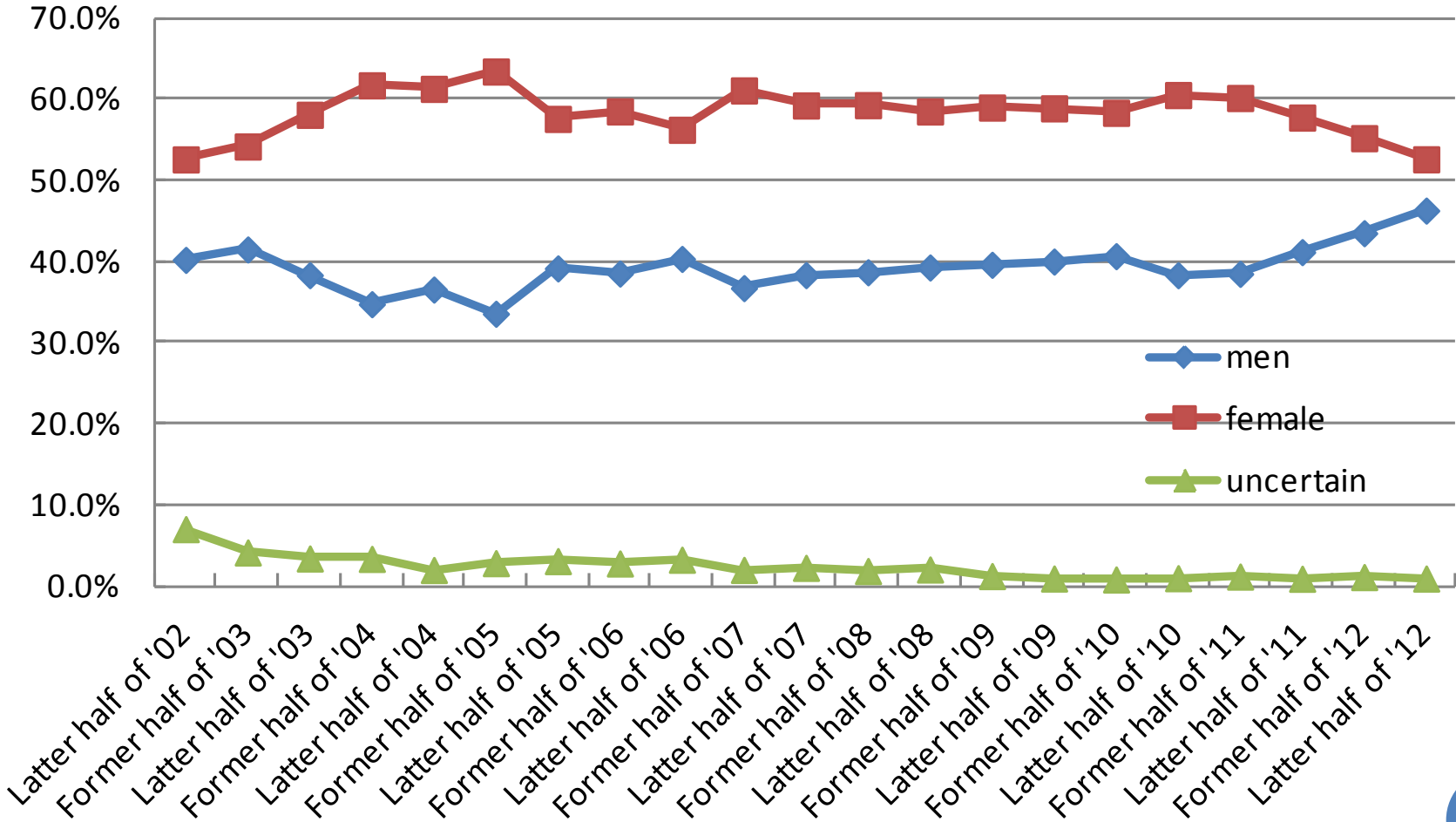
CHANGE IN THE CALLS

ACCORDING TO TIME

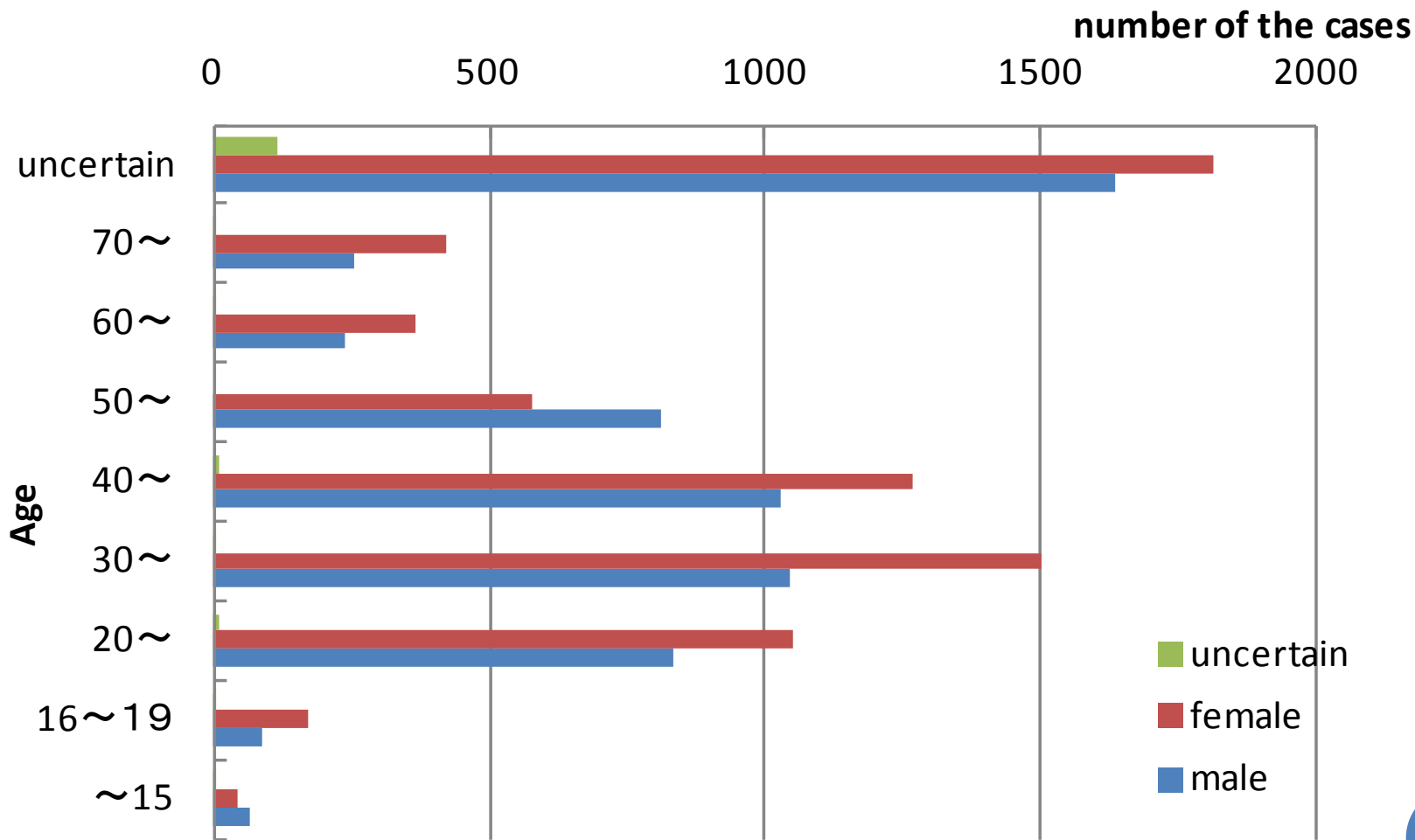
number / hour



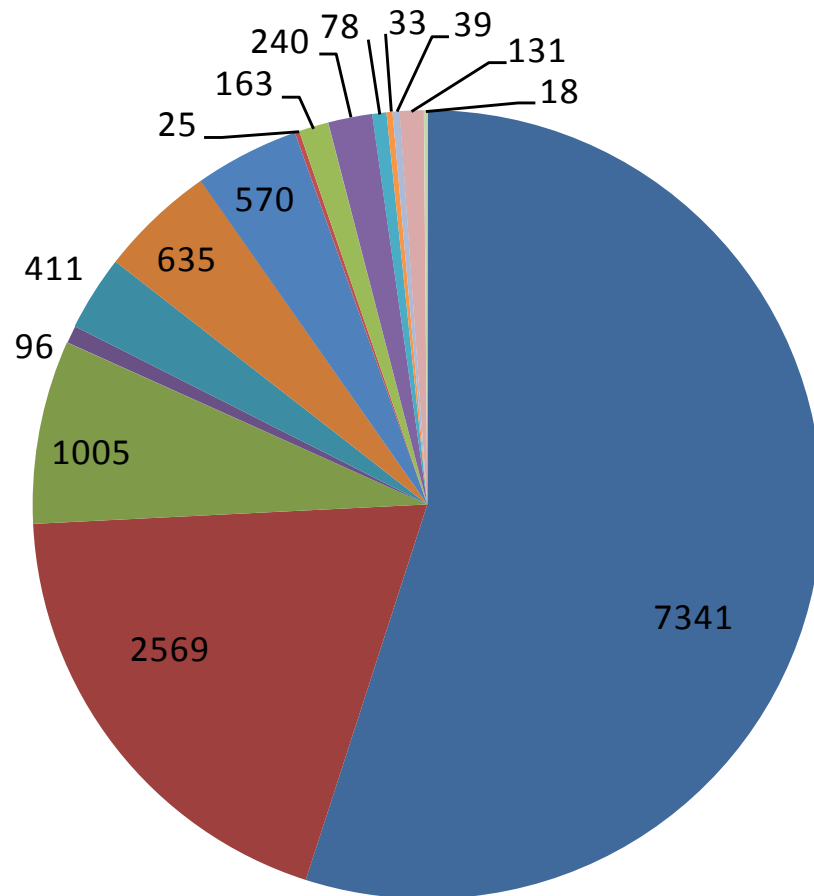
CHANGE IN MALE / FEMALE RATIO



DISTRIBUTION OF AGE OF THE PATIENTS

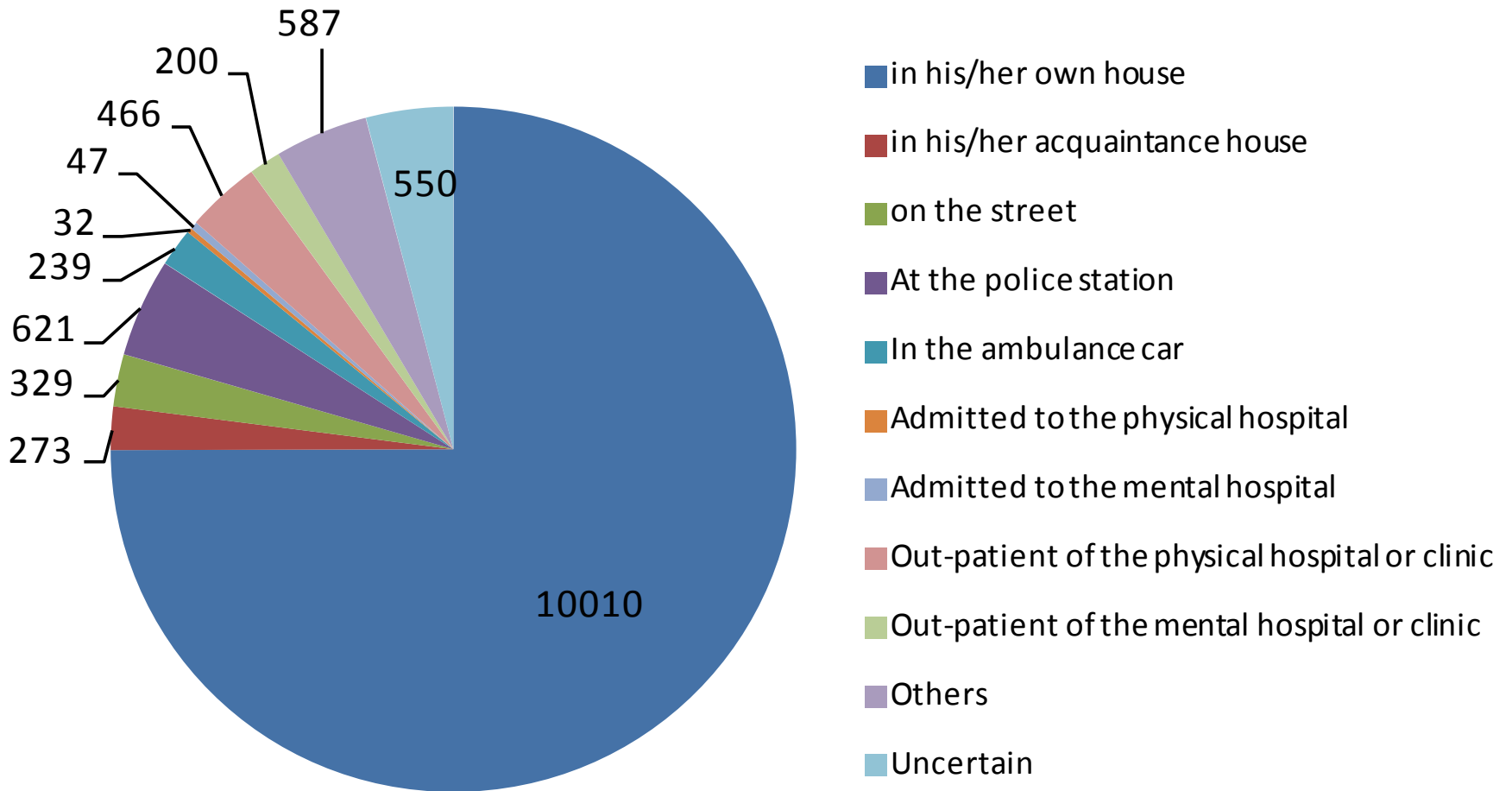


WHO MADE THE EMERGENCY CALL TO MEICMI ?

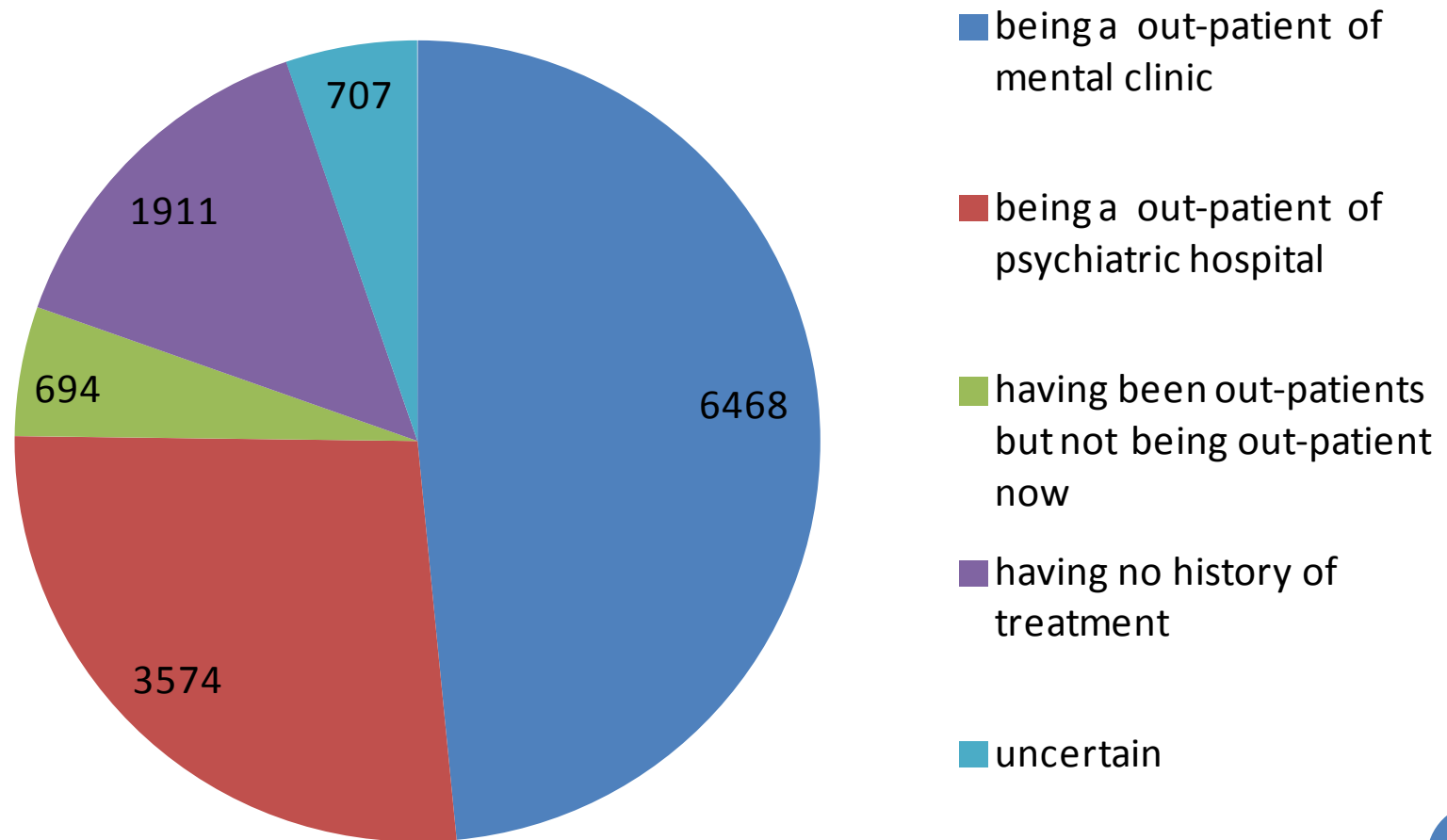


- He/She by him/herself
- Family member who lives with the patient
- Family member who does not live with the patient
- Family member uncertain about living with him/her
- Other acquaintance
- Police
- Emergency staff of the Fire Department
- Psychiatric institution (public)
- Psychiatric institution (private)
- Physical institution (general hospital & clinic)
- Other public institution
- Rehabilitation facilities
- Institution for the welfare of the aged people
- Others
- Uncertain

WHERE IS THE PATIENT?

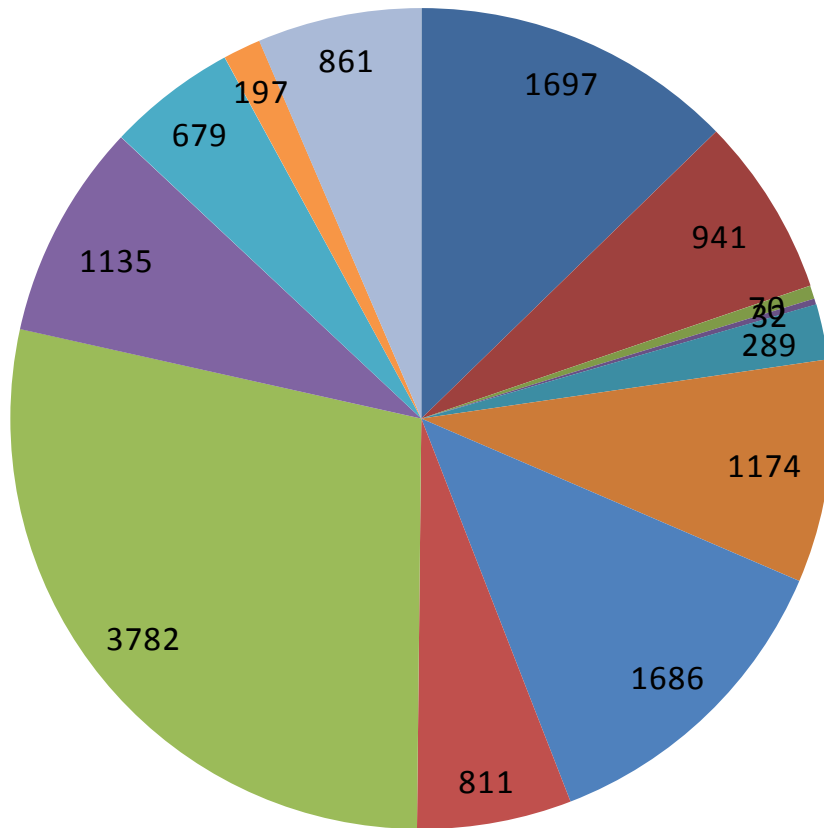


HISTORY OF TREATMENT (OUT-PATIENT) FOR MENTAL ILLNESS



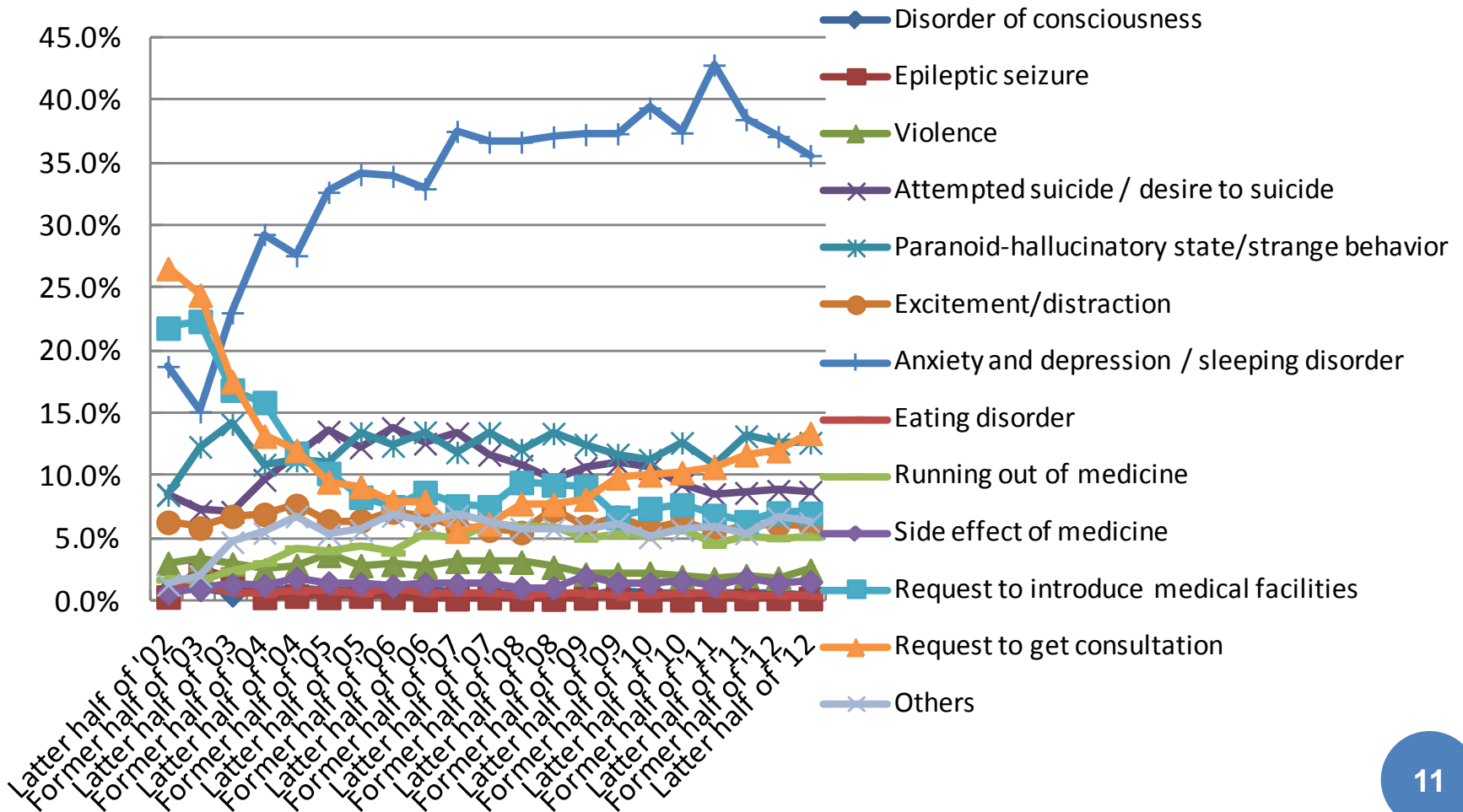
MAJOR REASON

FOR PHONE CALL TO MEICMI

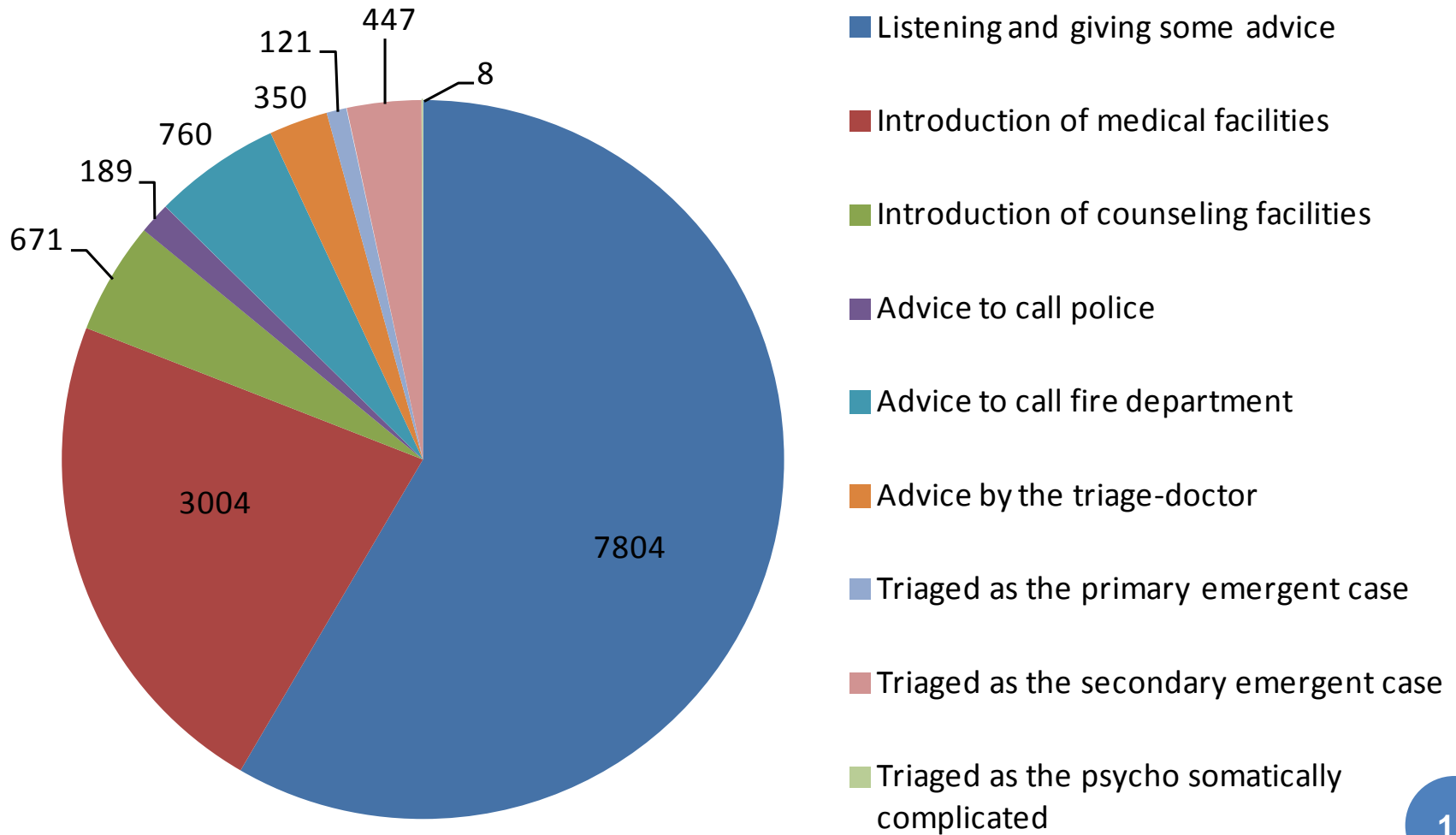


- Request to get consultation
- Request to introduce medical facilities
- Disorder of consciousness
- Epileptic seizure
- Violence
- Attempted suicide / desire to suicide
- Paranoid-hallucinatory state/strange behavior
- Excitement/distraction
- Anxiety and depression
- Eating disorder / sleeping disorder
- Running out of medicine
- Side effect of medicine
- Others

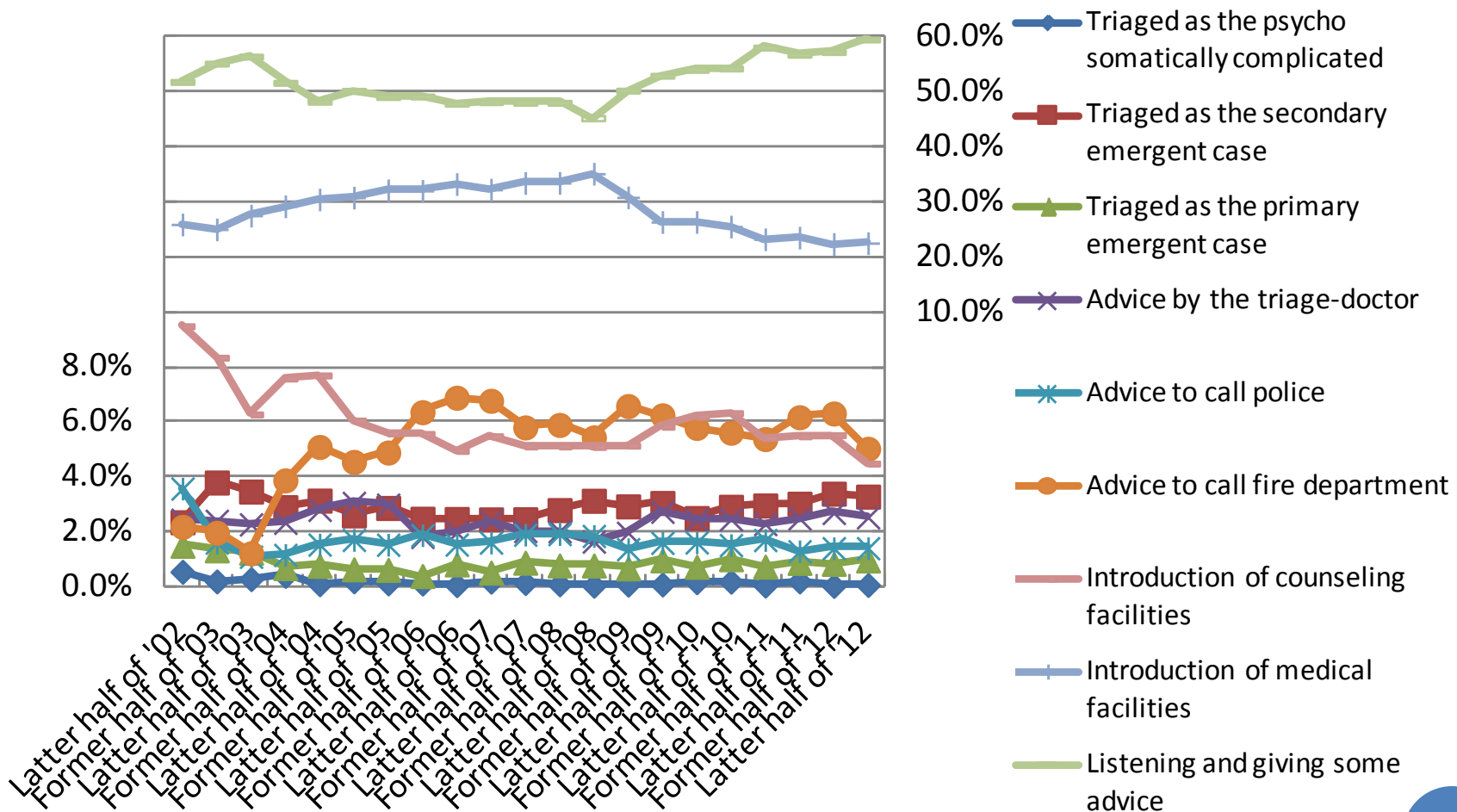
CHANGE IN MAJOR REASON FOR PHONE CALL TO MEICMI



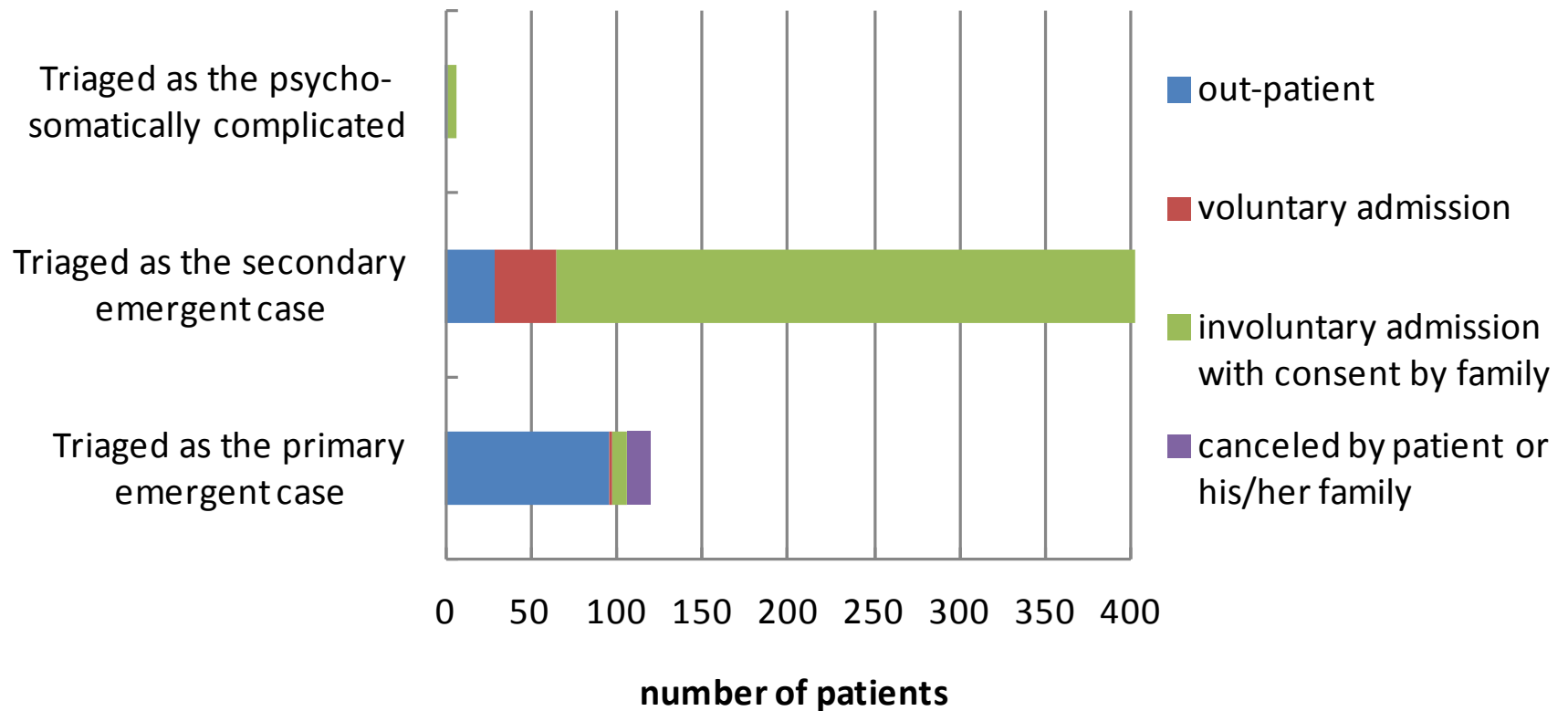
WHAT MEICMI DID FOR THE EMERGENCY PHONE CALLS



CHANGE IN WHAT MEICMI DID FOR THE EMERGENCY PHONE CALLS

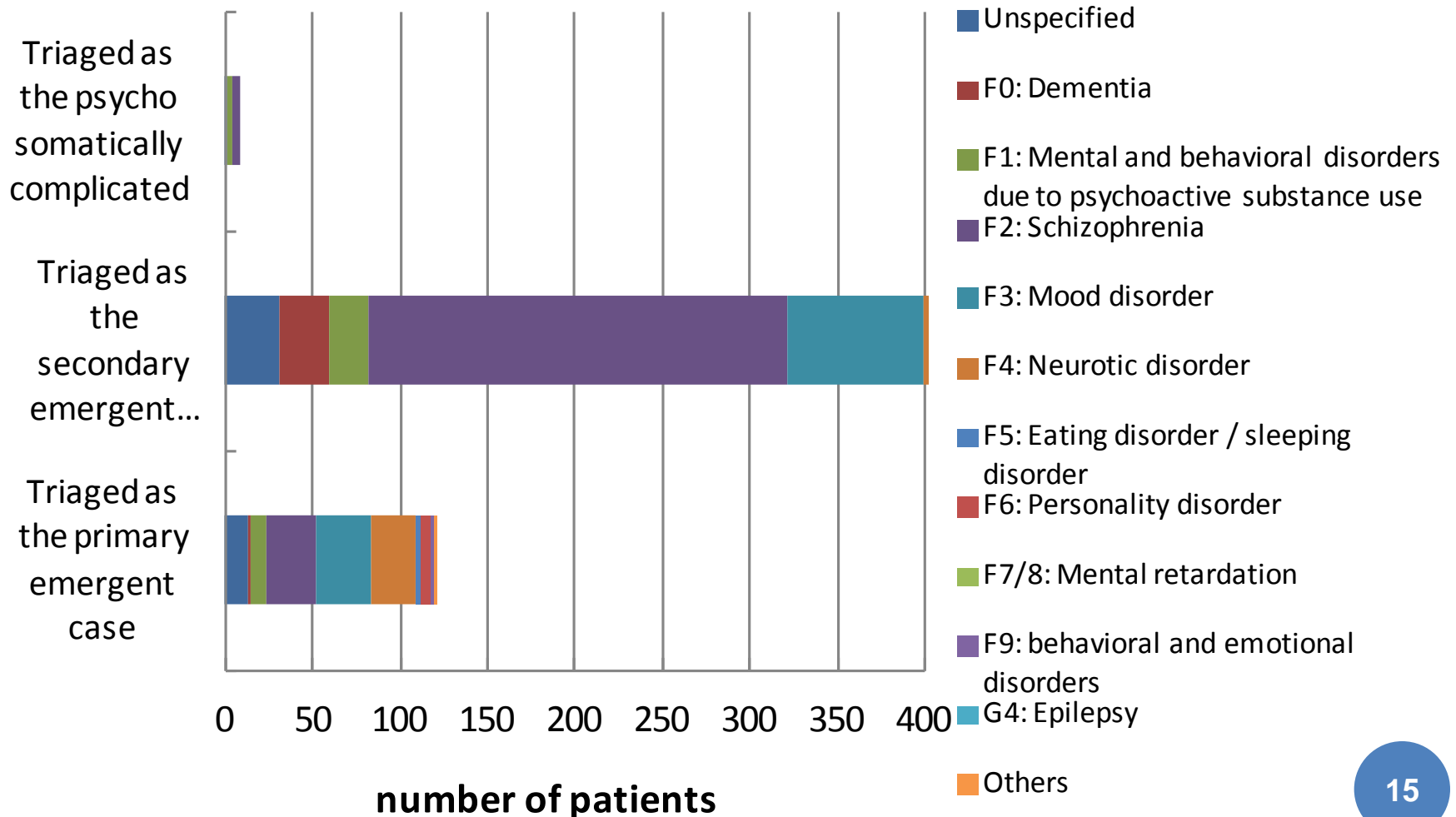


WHAT DECISION WAS MADE FINALLY FOR THE PATIENT

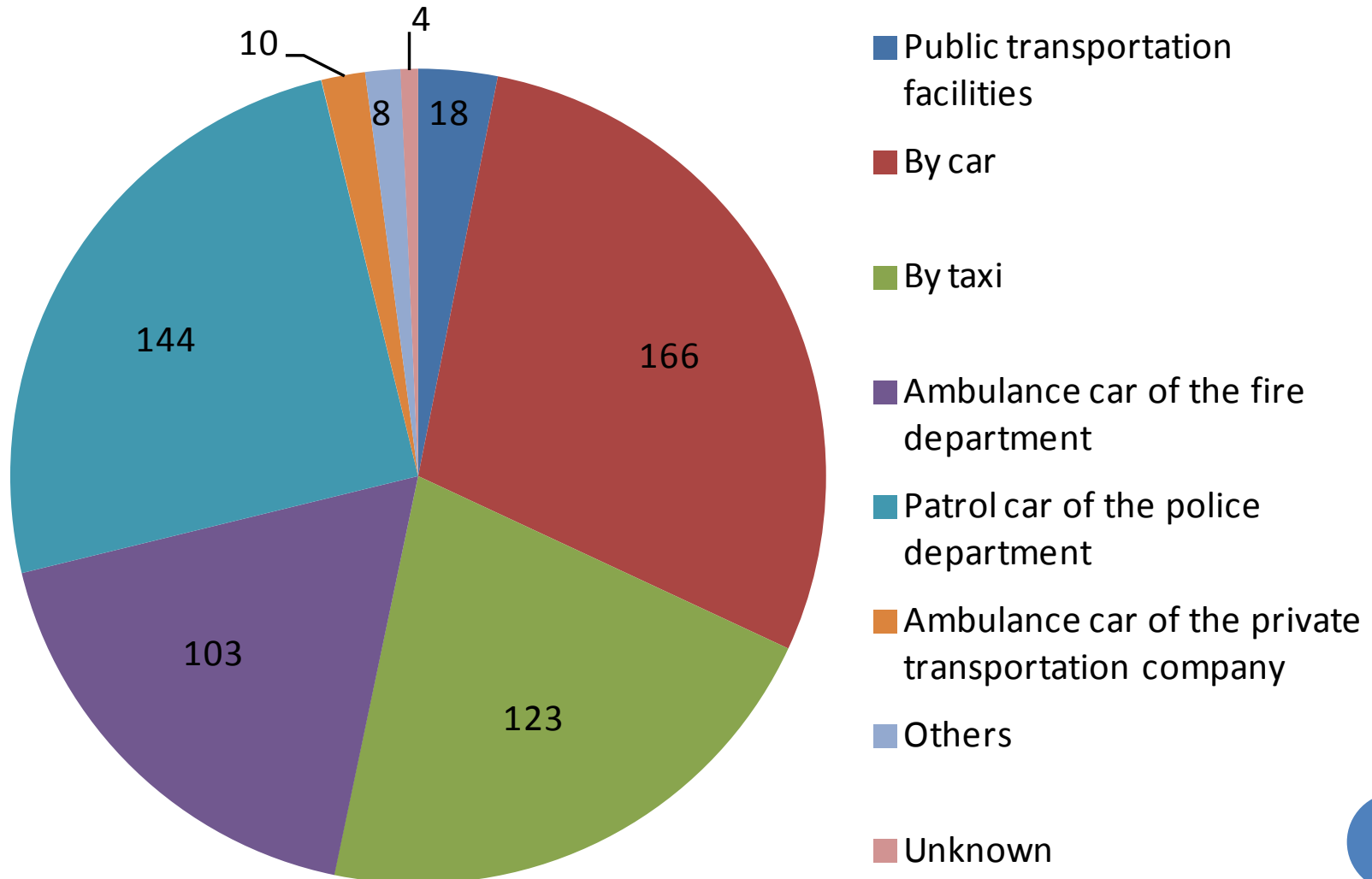


DISTRIBUTION OF DIAGNOSES

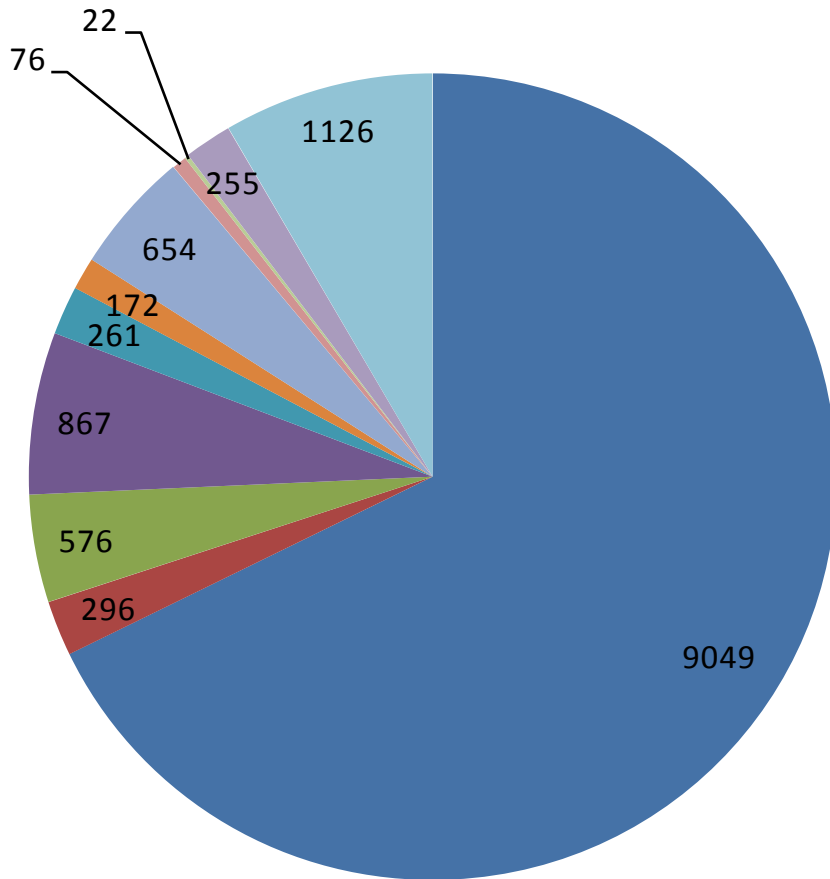
OF PATIENTS



MEASURE OF TRANSPORTATION



REASON OF NOT BEING REFERRED TO MEDICAL FACILITIES



- no need of emergent treatment
- no beds (beds saved for emergency having been consumed)
- still in the process of consulting
- referred to the somatical emergency
- high possibility of hurting himself/herself or others because of mental disorder
- diorders due to psycho-active substance use
- being not accompanied by the person responsible for protetion of the patient with mental disorder
- not having measures of transportation
- not having medical insurance card
- patient outside of Tokyo
- others

CHANGE IN REASON OF NOT BEING REFERRED TO MEDICAL FACILITIES

